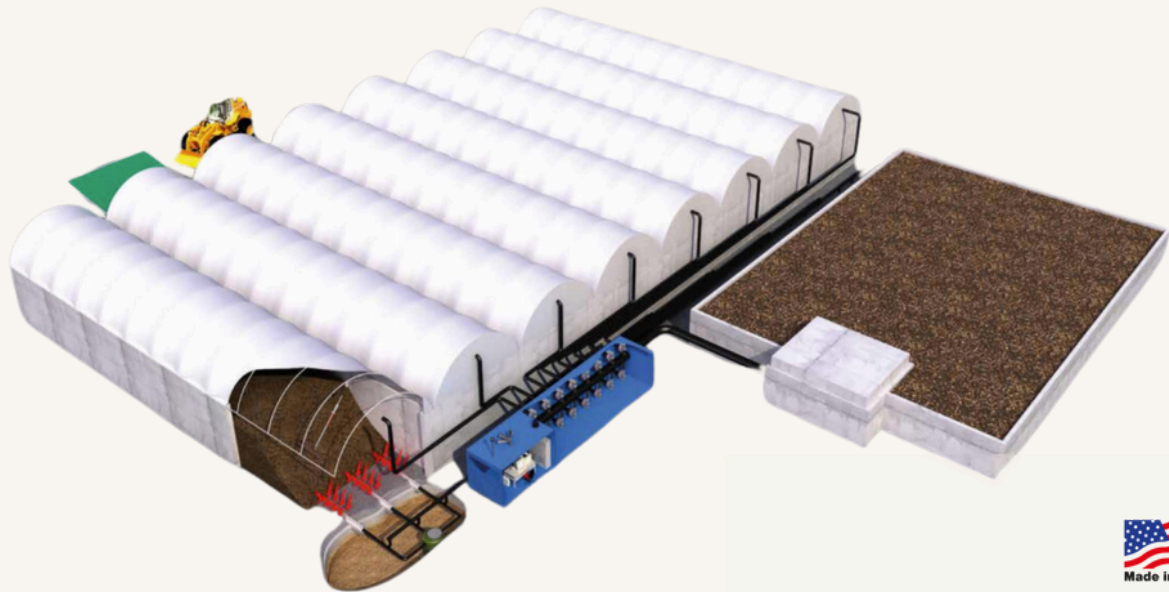


# Mechanical Biological Treatment (MBT)



## Cut Sheet



### Low Waste

Reduces waste going to landfill by roughly 80%



### Less Emissions

Reduces methane from landfilled portion by 95%



### Recyclable

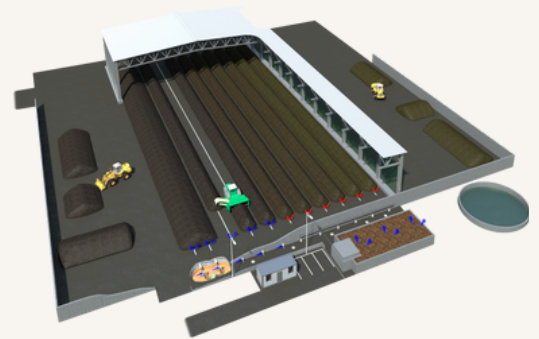
Transforms 40-80% of MSW into recyclable material

# Mechanical Biological Treatment (MBT)



## Specifications

As landfills fill up and become increasingly difficult to permit, many throughout the United States are turning to MBT; recovering recyclables and reducing landfill reliance by roughly 80%. MBT involves sorting trash (MSW) into metal and plastic recyclables, RDF, and organics. The organic fraction (OFMSW) is composted, reducing the weight and stripping leachate / emission potential before being used as landfill cover or sold as a low value compost. GMT offers proven MBT solutions with over 30 references throughout the Middle East and Europe.



### FEATURES

<b>Active composting</b>	CompoBox Tunnel
<b>Curing (optional)</b>	TAP
<b>Time to reach 20 mg AT4</b>	3 to 4 weeks
<b>Time to reach 10 mg AT4</b>	8 to 12 weeks
<b>Suggested capacity</b>	10,000+ T/year
<b>Emissions compared to windrow</b>	90% to 99% less
<b>Leachate generation</b>	Zero discharge
<b>Electricity</b>	Single or three phase
<b>Aeration controls</b>	✓
<b>Warranty</b>	1 year



SCAN ME