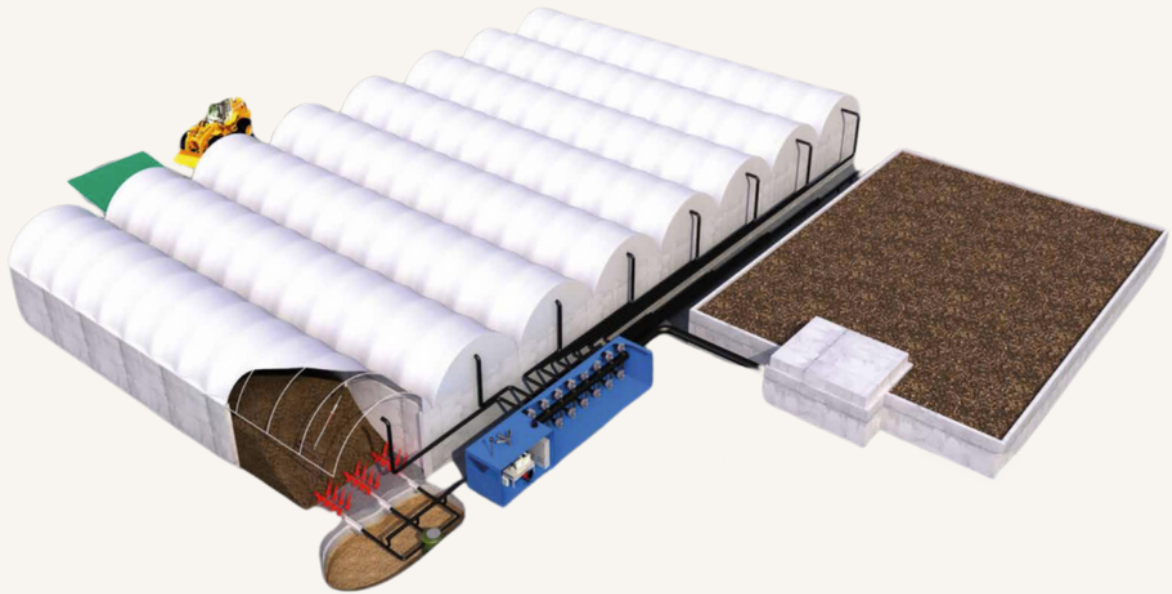


Mechanical Biological Treatment (MBT)



Cut Sheet



Low Waste

Reduces waste going to landfill by roughly 80%



Less Emissions

Reduces methane from landfilled portion by 95%



Recyclable

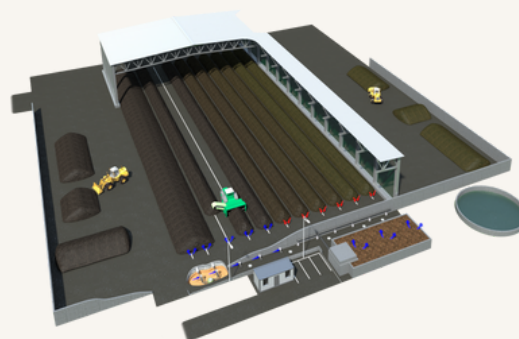
Transforms 40-80% of MSW into recyclable material

Mechanical Biological Treatment (MBT)



Specifications

As landfills fill up and become increasingly difficult to permit, many throughout the United States are turning to MBT; recovering recyclables and reducing landfill reliance by roughly 80%. MBT involves sorting trash (MSW) into metal and plastic recyclables, RDF, and organics. The organic fraction (OFMSW) is composted, reducing the weight and stripping leachate / emission potential before being used as landfill cover or sold as a low value compost. GMT offers proven MBT solutions with over 30 references throughout the Middle East and Europe.



FEATURES

Active composting	CompoBox Tunnel
Curing (optional)	TAP
Time to reach 20 mg AT4	3 to 4 weeks
Time to reach 10 mg AT4	8 to 12 weeks
Suggested capacity	10,000+ T/year
Emissions compared to windrow	90% to 99% less
Leachate generation	Zero discharge
Electricity	Single or three phase
Aeration controls	✓
Warranty	1 year



SCAN ME