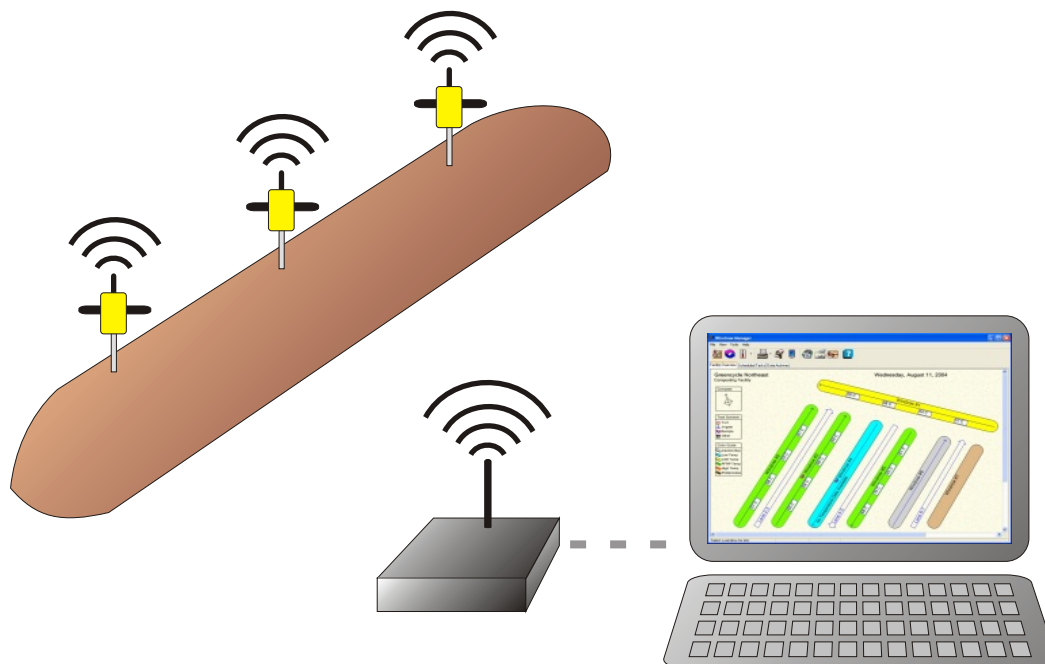


Wireless Windrow Manager™



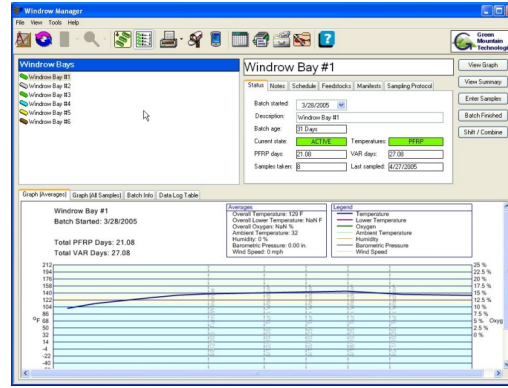
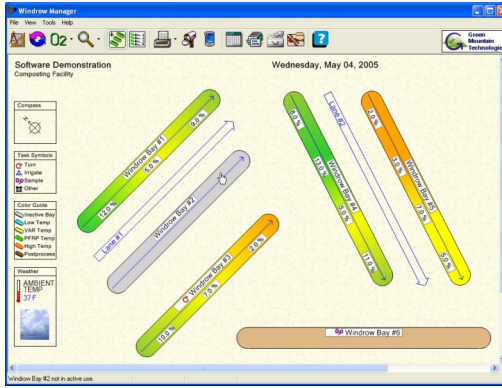
Wireless Temperature Monitoring and Data-logging

The Wireless Windrow Manager system works with our popular Windrow Manager software package to make temperature monitoring and record keeping easier than ever. Now you can see what's happening with every compost pile, windrow or bay on your facility without ever leaving your office.

This is how it works: The battery-powered probe automatically transmits temperature readings to the wireless base station from up to 600 feet away. Data is then logged internally by the base station to be retrieved periodically by Windrow Manager software running on a Windows™ PC. The PC software allows you to view current temperatures and to view and print temperature records for all your compost batches.

The rugged stainless-steel probe, with its weatherproof head, is built to withstand the corrosive conditions of composting. The full system includes the wireless base station, as many wireless temperature probes as are required, and the Windrow Manager facility management software for Windows computers.





Windrow Manager Software

The Windrow Manager software allows you to visualize your compost facility by creating a custom layout with temperatures, scheduled tasks and other data displayed on top of each windrow. You can keep track of each batch from start to finish, including feedstock recipes, temperature records, and batch-related activities. Batch records are saved in the batch archive and can be viewed or printed at any time, making compliance reporting a breeze. Find out more about Windrow Manager software and accessories by going to our web site or calling to request a brochure.

Specifications

Wireless Base Station

Frequency	418 Mhz receiver; 600 foot signal range
Connectivity	9-pin RS232 (serial) or Ethernet
Error checking	Yes
Signal capacity	100 transmitters simultaneously online
Logging capacity	15,000 measurements stored internally
Software	Wireless Windrow Manager Connectivity Module

Wireless Temperature Probe

Frequency	418 Mhz receiver; 600 foot signal range
FCC compliant	Yes (part 15 of FCC rules)
Length overall	48"
Probe stem	42" long, 1/2" diameter stainless-steel
Probe head	rugged, water-proof and high-visibility (neon yellow)
Battery life	6 to 10 years (typical)

Note: An FCC license is not required to install and operate the base station and probes.

© Green Mountain Technologies, Inc.



East Coast Office

PO Box 560 / 51 Stimpson Hill Rd
Whitingham, VT 05361-0560
Tel (802) 368-7291 Fax 368-7313

Green Mountain Technologies
www.gmt-organic.com
1-800-610-7291

West Coast Office

5350 Mcdonald Ave.
Bainbridge Island, WA 98110
Tel or Fax (206) 842-5471